

P R A Z  
D E L A V A L L A D E



ERIC MCHENRY  
*Right Turn at Rabbit Road*  
17 February - 25 March 2023

PRAZ-DELAVALLE LOS ANGELES  
6150 Wilshire Blvd, Los Angeles CA 90048  
+1 323 509 0895



"In the beginning was the car, and the car was with art, and the car was art... the visual language of the Baroque in these magical automobiles, in the way the smooth folds of steel and the hundreds of coats of transparent lacquer caught the light and held it as the cars slipped through the bright streets like liquid color—like Caravaggio meets Bernini, on wheels." — Dave Hickey



Eric McHenry  
*Right Turn at Rabbit Road*, 2023  
Exhibition view, Praz-Delavallade Projects Los Angeles

Eric McHenry was born in Flora, Illinois on a family farm filled with horses, quail and emu, and got deep into skate culture and conceptual art as an adolescent in Asheboro, North Carolina, but it wasn't until he relocated to California at the age of 19 that he became the tireless draftsman he is today. Throughout his first decade in Los Angeles, McHenry embarked on a series of narrative-based works on paper that investigated war, travel, religion, music, and the creation of manmade and natural landscapes. "There were always tools for creating in the work and I was interested in playing God to a sense," says McHenry. "Freezing time and directing motion in an uncanny way."





Eric McHenry  
*Right Turn at Rabbit Road*, 2023  
Exhibition view, Praz-Delavallade Projects Los Angeles



Eric McHenry  
*Godzilla Vs Megalon*, 2023  
oil on linen in artist made frame  
6 1/2 x 8 5/8 in (16.5 x 21.9 cm)  
(EM23P5)



Right Turn at Rabbit Road, McHenry's solo debut with Praz-Delavallade Projects, will be the first exhibition of his oil paintings. Filled with magical creatures (ranging from horses with feathered tails to a primate brandishing a crucifix), a landscape in motion from the perspective of a rollercoaster, titanic vessels and various motorcraft hovering in space, and a series of painted and constructed road assemblages—made with oil, canvas, wood, and diecast cars manufactured in Chicago in the 1950's—McHenry's mysterious mise-en-scene evokes a surreal world orbiting around Los Angeles thoroughfares. Broomsticks fly over grassy plains, cannonballs crash through paddocks and ponds shaped like bunnies appear out of nowhere. Many compositions contain juxtapositions of shiny and rough elements, a nod to the analog/digital divide. There's no man behind the wheel in McHenry's throwback mindscape, a hesh reduction of Edward Hopper and Grant Wood through the eyes of a Midwestern-born, Southern-raised Angeleno.



Eric McHenry  
*Right Turn at Rabbit Road*, 2023  
Exhibition view, Praz-Delavallade Projects Los Angeles





Eric McHenry in studio  
Image by: Andrew James Peters

“Though the world is roaring out of this RECENT slumber, I’ve always been more interested in a slow-paced experience of life,” says McHenry, who is also creating a series of paintings and painted objects INVOKING REST AND RELAXATION. “It’s the world I want to live in.”

#### ERIC McHENRY

Over the past decade Los Angeles-based artist McHenry has published numerous books including *Only Verse*, a collection of poetry (illustrated with his drawings) and *Piccolo Vignette*, a book of portraits made on hotel stationery. His work has been the subject of solo shows in and around Los Angeles and group shows in New York, Europe and Australia.



Eric McHenry  
*Right Turn*, 2023  
oil on linen, canvas, 1950's  
found car on panel, artist frame  
6 x 8 (15.2 x 20.3 cm)  
(EM23P25)





Eric McHenry  
*God and the Electric Fence*, 2023  
oil on linen in artist made frame  
6 1/2 x 8 1/8 in (16.5 x 20.6 cm)  
(EM23P4)



Eric McHenry  
*Untitled*, 2023  
oil on linen & wood  
15 1/2 x 8 5/8 x 20 in (39.4 x 21.9 x 50.8 cm)  
(EM23S1)



Eric McHenry  
*Right Turn at Rabbit Road, 2023*  
Exhibition view, Praz-Delavallade Projects Los Angeles



Eric McHenry  
*Buffet*, 2023  
oil on linen in artist made frame  
8 x 1/8 (20.5 x 29.5 cm)  
(EM23P9)





Eric McHenry  
*Right Turn at Rabbit Road*, 2023  
oil on linen in artist made frame  
6 x 8 (15.2 x 20.3 cm)  
(EM23P1)



Eric McHenry  
*Rotten Root*, 2023  
oil on linen in artist made frame  
6 1/2 x 7 5/8 (16.4 x 19.2 cm)  
(EM23P8)



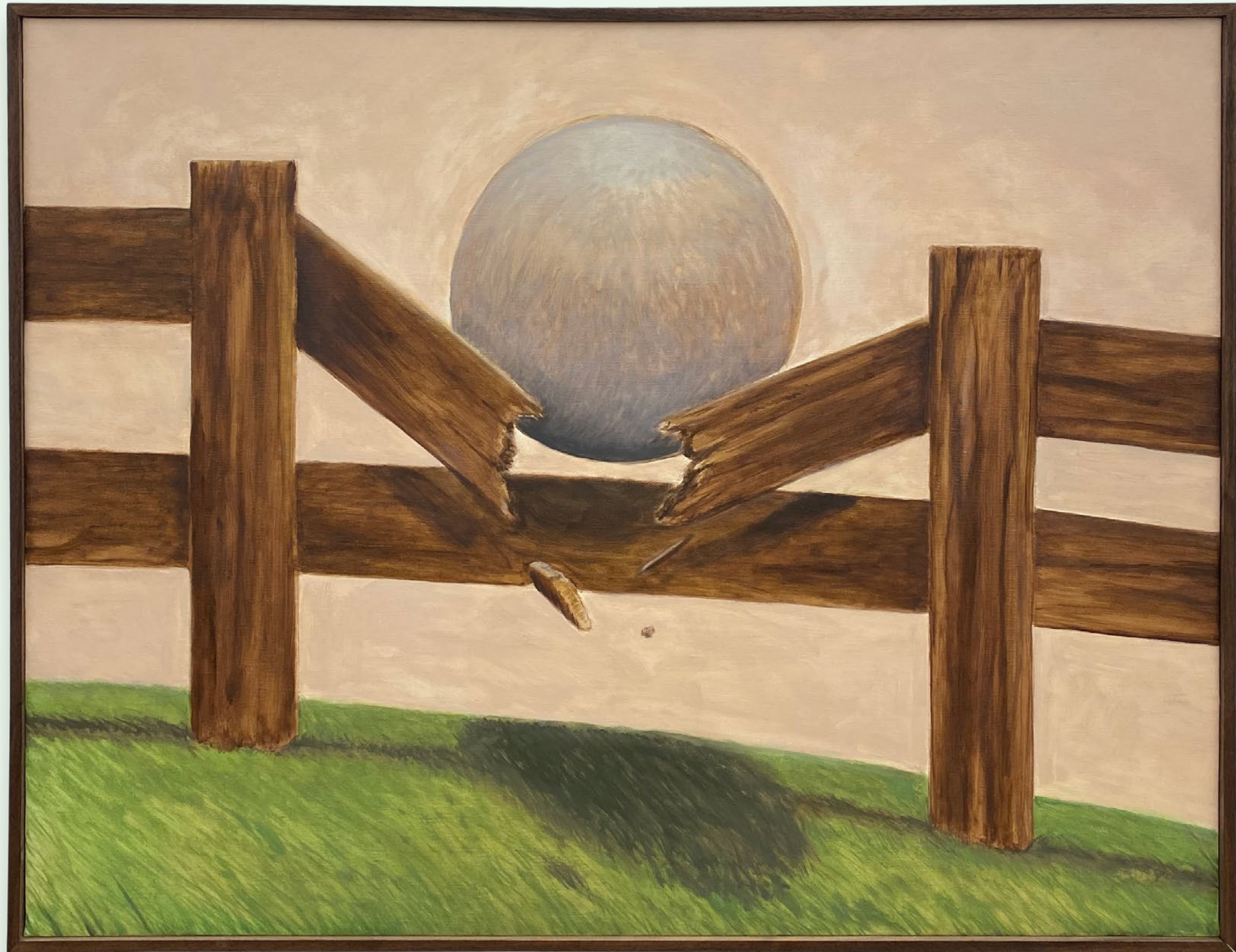


Eric McHenry  
*Spreading Tail Feathers To Fly*, 2023  
oil on linen in artist made frame  
30 3/4 x 36 5/8 (78.1 x 93 cm)  
(EM23P6)



Eric McHenry  
*Cave Painter*, 2023  
oil on linen in artist made frame  
7 1/8 x 4 5/8 (18.1 x 11.7 cm)  
(EM23P3)





Eric McHenry  
*Coming Through*, 2023  
oil on linen in artist made frame  
24 3/4 x 32 (62.8 x 81.3 cm)  
(EM23P2)



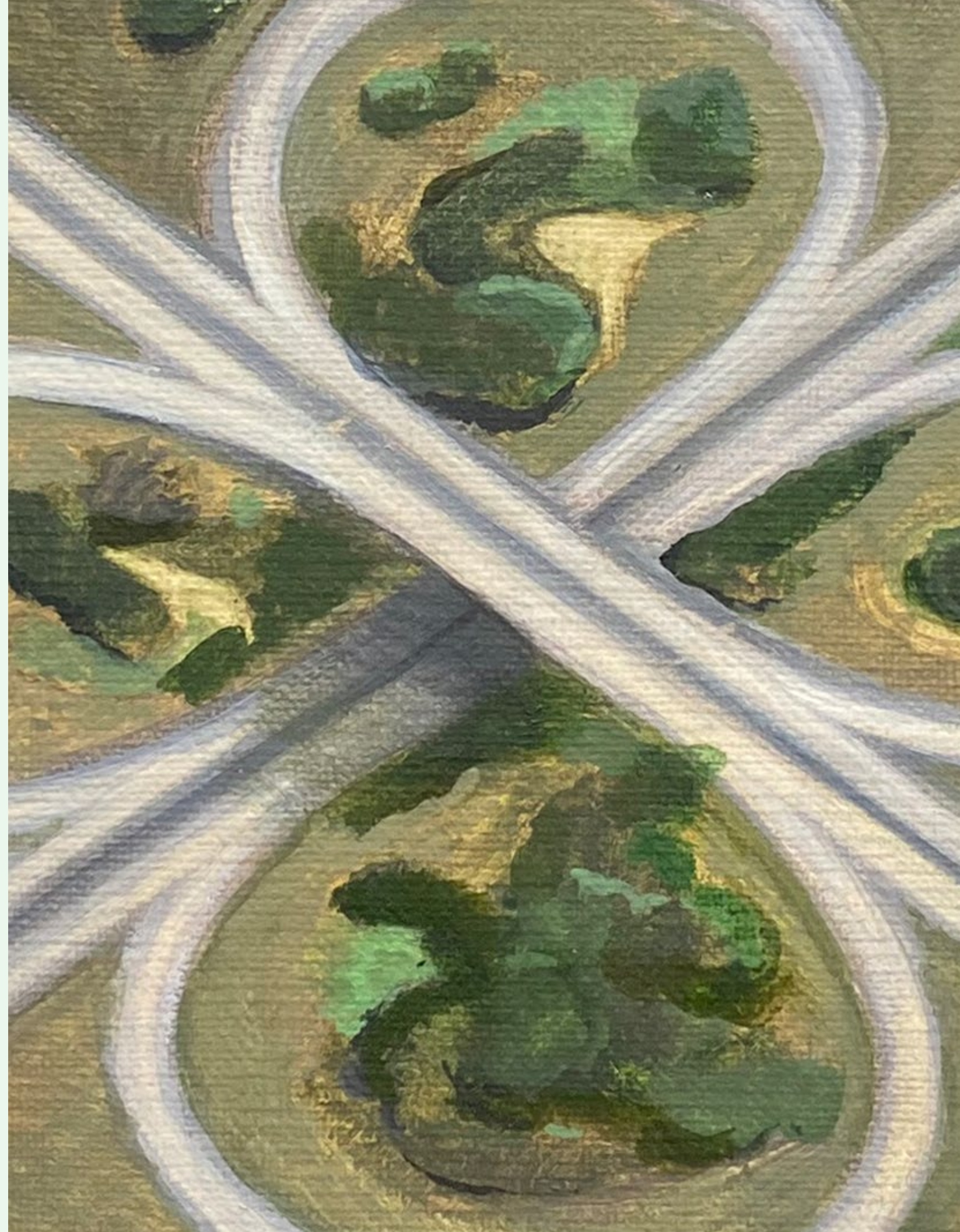
Eric McHenry  
*I WANNA RING IT*, 2023  
oil on linen in artist made frame  
11 7/8 x 8 5/8 (30 x 21.7 cm)  
(EM23P12)



Eric McHenry  
*Circle and Square*, 2023  
oil on linen in artist made frame  
6 5/8 x 8 5/8 (16.7 x 21.7 cm)  
(EM23P11)



Eric McHenry  
*Dixie Roundabout*, 2023  
oil on linen in artist made frame  
6 3/4 x 8 3/4 (17.1 x 22.1 cm)  
(EM23P7)





Eric McHenry  
*Adios Orange Car*, 2023  
oil on linen in artist made frame  
6 3/4 x 8 7/8 (17.1 x 22.4 cm)  
(EM23P15)



Eric McHenry  
*Do The Thing*, 2023  
oil on linen in artist made frame  
8 1/8 x 11 3/4 (20.6 x 29.8 cm)  
(EM23P18)





Eric McHenry  
*Fellowship Chairs*, 2023  
oil on linen in artist made frame  
6 1/2 x 8 5/8 (16.5 x 21.7 cm)  
(EM23P14)



Eric McHenry  
*Logwash*, 2023  
oil on linen in artist made frame  
15 x 8 1/8 (38.1 x 20.6 cm)  
(EM23P19)





Eric McHenry  
*Untitled*, 2023  
oil on linen, canvas & 1950's  
found car, artist made frame  
24 1/2 x 24 1/2 (62.2 x 62.2 cm)  
(EM23P27)



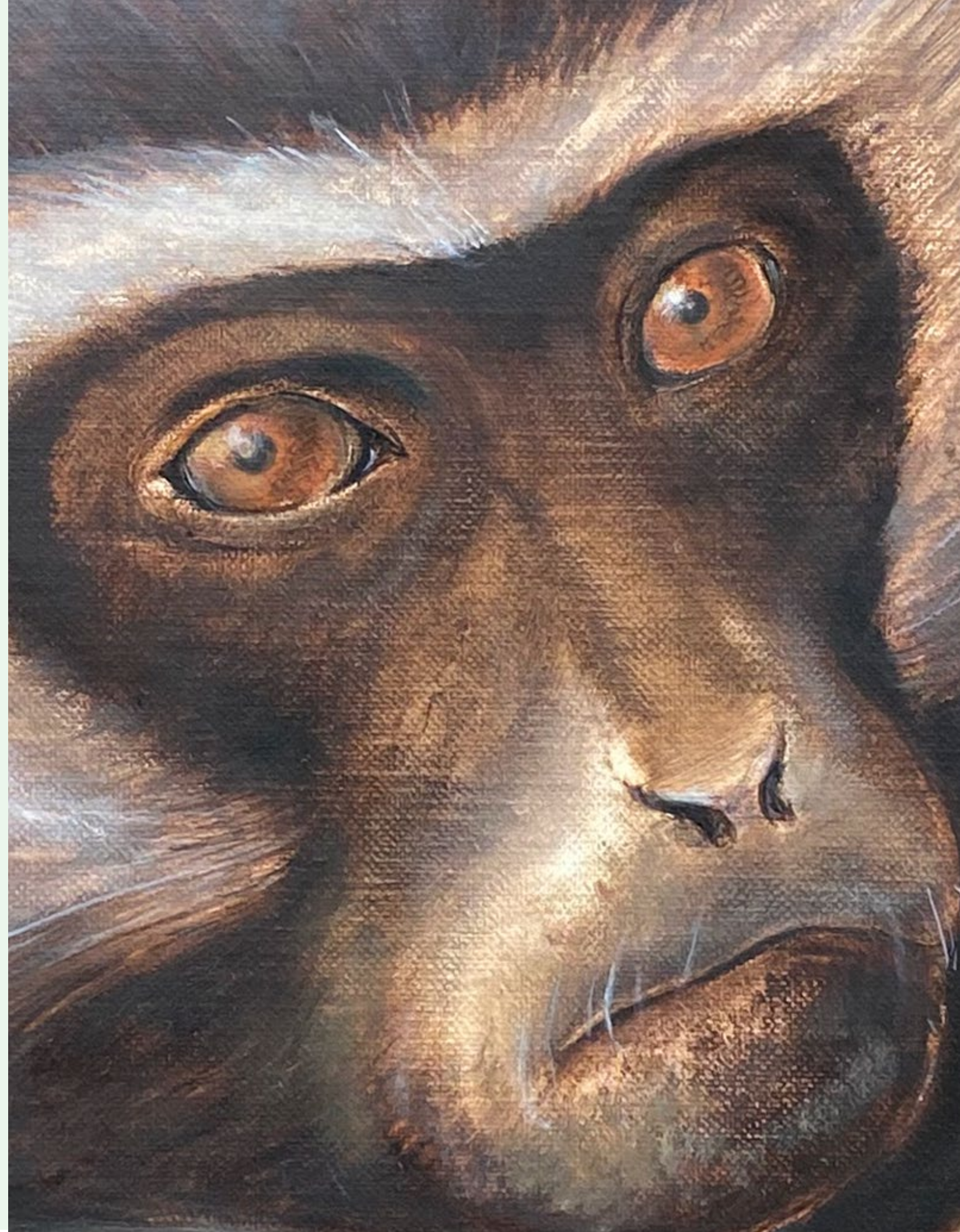
Eric McHenry  
*Untitled*, 2023  
oil on linen & wood  
15 1/2 x 8 5/8 x 20 in (39.4 x 21.9 x 50.8 cm)  
(EM23S2)



Eric McHenry  
*Broom Illusion (No.2)*, 2023  
oil on linen in artist made frame  
8 1/2 x 12 5/8 (21.4 x 32.1 cm)  
(EM23P17)



Eric McHenry  
*Evangelical vervet (No.2)*, 2023  
oil on linen in artist made frame  
15 3/4 x 12 3/4 in (40 x 32.4cm)  
(EM23P28)





Eric McHenry  
*Broom Illusion (No.4)*, 2023  
oil on linen in artist made frame  
8 1/2 x 11 3/4 in (21.6 x 29.8 cm)  
(EM23P16)

Praz-Delavallade Los Angeles  
6150 Wilshire Blvd  
Los Angeles CA 90048  
+1 (323) 509 0895  
losangeles@praz-delavallade.com  
www.praz-delavallade.com

Praz-Delavallade Paris  
5 rue des Haudriettes  
75003 Paris  
+33 (0) 1 45 86 20 00  
info@praz-delavallade.com

This digital catalog was published on the occasion of Eric McHenry's solo exhibition *Right Turn at Rabbit Road* from 17 February - 25 March 2023 with Praz-Delavallade Projects Los Angeles.

Published by Praz-Delavallade  
© Praz-Delavallade Los Angeles, Paris 2023

Graphic design & artwork photography: Kevin Luna


Text: Michael Slenske

Special thanks to Eric McHenry, Michael Slenske, Andrew James Peters, Simon Cardoza.

Courtesy: Courtesy of the Artist & Praz-Delavallade Los Angeles & Paris

Exhibition photography: © Simon Cardoza





For all inquiries please contact Eli Consilvio at  
[eli@praz-delavallade.com](mailto:eli@praz-delavallade.com)

For press and additional images please contact Kevin Luna at  
[losangeles@praz-delavallade.com](mailto:losangeles@praz-delavallade.com)